



# User Manual

## OUTDOOR HD DISPLAY

### MODEL:

CL-4765, CL-5565



[www.peerless-av.com](http://www.peerless-av.com)

# CONTENTS

General Safety Precautions .....	3
FCC Caution.....	5
Notice .....	5
Relevant Information .....	5
System Installation And Electrical Requirements .....	6
Electrical Code .....	6
Power Source .....	6
Set Up Instructions .....	7
What's In The Box .....	7
Connecting Cables .....	7
Source Connection Guide .....	7
Cable Seals .....	8
Installation Of The Rear Cover Plate.....	8
Connect To The Power Source.....	9
Prepare Your Display For Mounting .....	9
Prepare The Screen For Viewing.....	9
Battery Installation And Replacement .....	10
Power On/Off the Display .....	10
Operating Instructions .....	11
Using The Remote Control.....	11
Rear Keypad Controls .....	11
(RS-232C) Serial Control Of The Display .....	12
Communication Conditions .....	12
Communication Procedure .....	12
Control Codes .....	12
Navigating The On-Screen Menu .....	13
Picture .....	13
Audio .....	13
Time .....	13
Setup .....	13
Lock .....	13
Channel.....	13
Tips.....	14
Troubleshooting.....	14
Care Of Screen .....	14
Mobile Telephone Warning .....	14
End Of Life Directives .....	14
License Agreement & Trademark Notice .....	14
Product Specifications .....	15
Warranty .....	16

## GENERAL SAFETY PRECAUTIONS

### ▲ WARNING

#### RISK OF ELECTRICAL SHOCK

To reduce the risk of electric shock, do not disassemble the unit under any circumstances. No user serviceable parts inside. All product services should be done by the Peerless-AV certified service personnel.

#### Read before operating equipment

Thank you for purchasing our product. Before using it, please read this user manual carefully and follow the instructions correctly for safe operation. Please keep this manual handy for future reference. Also, please be sure to always include this user manual in the packaging when transferring or transporting this product to a different location.

The lamps in this product contain mercury. Please dispose according to state, local or federal law.

#### Batteries Installed Warning

**CAUTION** - Danger of explosion if batteries are incorrectly re-placed. Replace only with the same or equivalent type. The batteries shall not be exposed to excessive heat such as sunshine, fire or the like.

#### CAUTION:

These servicing instructions are for use by qualified service personnel only. To reduce the risk of electric shock, do not perform any servicing other than that contained in the operating instructions unless you are qualified to do so.

1. Read these instructions.
2. Keep these instructions.
3. Heed all warnings.
4. Follow all instructions.
5. Do not defeat the safety purpose of the polarized or grounding- type plug A polarized plug has two blades with one wider than the other. A grounding type plug has two blades and a third grounding prong. The wide blade or the third prong are provided for your safety. If the provided plug does not fit into your outlet, consult an electrician for replacement of the obsolete outlet.
6. Protect the power cord from being walked on or pinched particularly at plugs, convenience receptacles, and the point where they exit from the apparatus.
7. Refer all servicing to qualified service personnel. Servicing is required when the apparatus has been damaged in any way, such as power-supply cord or plug is damaged, does not operate normally, or has been dropped.
8. Only use attachments/accessories specified by the manufacturer.
9. In case of emergency such as fire or electric shock caused by the product, immediately contact 911 or proper emergency police / fire service agencies in your country.
10. If monitor or glass is broken, do not come in contact with the liquid crystal and handle with care.
11. Follow instructions for wall, shelf or ceiling mounting as recommended by the manufacturer.
12. An outdoor antenna should not be located near overhead power lines or any electrical circuits.
13. If an outside antenna is connected to the receiver, confirm that the antenna system is grounded to protect against voltage surges and built up static charges Section 810 of the National Electric Code, ANSI/NFPA No 70-1984, provides information with respect to proper grounding for the mast and supporting structure, grounding of the lead-in wire to an antenna discharge unit, size of grounding connectors, location of antenna discharge unit, connection to grounding electrodes and requirements for the grounding electrode.
14. Use properly rated power voltage. Use of non-rated voltage may cause fire, electric shock and severe damages to the product.
15. Do not open the cabinet under any circumstances. High voltage inside of this product may cause electric shock.

16. Under any circumstances, do NOT modify or disassemble this product as it may cause fire, electric shock, or severe damages to the product. Also any unauthorized modifications made to the product automatically void product warranty.
17. Never touch antenna lines or wires, if applicable or power cables or power plugs in such circumstances as lightning and thunder as it may cause electric shock.
18. Any severe physical impact on the product may cause certain components to fall out of place within or to break, which may cause fire or electric shock. In such event, do not operate the product. Contact the manufacturer for support.
19. Clean dust off the power plug, periodically, to keep it clean and dry, ensuring proper and safe operation of the product.
20. Do NOT destroy, process, or place the product close to any heating device; do NOT bend or twist power cords, power plugs, cables, or wires with excessive force; do NOT place any heavy object on the product as all of the above may cause damages to the product and result in fire or electric shock.
21. Do NOT touch power plugs with wet hands.
22. Always make sure to plug in the power plug firmly and completely. Incompletely placed power plugs may cause fire or electric shock due to built up heat emission.
23. Do NOT use any non-rated power sockets or power strips with many other devices jointly plugged in. The wire of non-designated capacity may cause fire due to built up heat emission. Try to use a single, directly dedicated and rated GFI power socket for the product for safe operation.
24. In case of product malfunction or unusual events such as electrical burning smell, smoke, or loss of content signals on TV/Display due to internal overheating, immediately turn off and unplug the power and contact the manufacturer.
25. Do NOT install the product at such unstable locations as moving objects, constantly vibrating props, or uneven surfaces. Improper installation may cause products to fall off. Follow mounting instructions properly for safe operation of the product.
26. Do NOT install the product near any poisonous gas or chemically unstable atmosphere as it may cause fire.
27. Do NOT install the product near any strong magnetic or electrical current field. It may cause fire, electric shock, or severe damages to the product. The product may be subject to any electromagnetic radiation, causing deterioration of content picture quality.
28. Do NOT leave any fire source such as candles close to or on the product as it may be a cause for fire or damages to the product.
29. Do NOT move or transport the product with any cables (power cables, content connectivity cables) plugged in to the source devices. Damages may occur to the cables, plugs, or jointing connectors of the cables due to forcible bending and stress, which may cause damages to the waterproof seal of the product, making it subject to fire, electric shock, or shorted circuit.
30. When unplugging, always grab the plugs of power cords or cables. Improper pulling of the cords or cables may cause damages to the waterproof seal of the product, making it subject to fire, electric shock, or shorted circuit.
31. Do NOT climb on the product.
32. Two persons or more shall transport the product.
33. Do NOT use any other power cords or connection cables than what is provided with the product or from the manufacturer directly. Use of untested, unauthorized, or substituted power cords or connection cables may be a cause for malfunction, fire, electric shock, or severe damages to the product. Also such use of improper or undesignated power cords or connection cables will void product warranty.
34. Always leave the Power Off when plugging or unplugging the power cords or connection cables to avoid electric shock or damages to the product.
35. Do NOT use any chemical such as paint thinner or benzene to clean the product's exterior. It may cause scratches on the surface, erasing proper indications, identification labels, or instructions on the exterior, which may be a cause for misuse and improper operation of the product.

# FCC CAUTION

To assure continued compliance and possible undesirable interference, ferrite cores may be used when connecting this display to video equipment; and maintain at least 400mm spacing to other peripheral device.

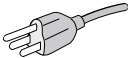
## Notice

**CAUTION:** Please use the power cord provided with this display in accordance with the table below. If a power cord is not supplied with this equipment, please contact your supplier. Only plug equipment into receptacles with GFI.

**IMPORTANT:** Peerless-AV is not responsible for any issues created by water present at the plug/receptacle insertion point.

**Plug Type:** North America

**Plug Shape:**



**Region:** USA/Canada

**Voltage:** AC 120V

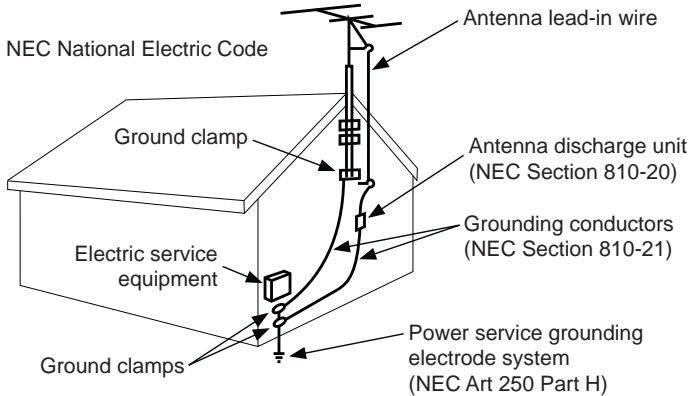
## Relevant Information

Be sure to keep record of your displays model number for future reference

# SYSTEM INSTALLATION AND ELECTRICAL REQUIREMENTS

## Electrical Code

**Note:** To the display system installer: This reminder is provided to call attention to Article 820-44 of the National Electric Code that provides guidelines for proper grounding and, in particular, specifies that the cable ground shall be connected to the grounding system of the facility. Outlet shall be installed near the equipment and shall be easily accessible.



**Note:** Installation shall incorporate UL Listed external surge protection rated 2500 Vpk or less, for 150 to 300 Vac mains, installed in accordance with Article 285 of ANSI/NFPA 70 or applicable local codes.

## Power Source

The display must be connected to a mains socket outlet with a protective earthing connection.

The main plug is used as the disconnect device and shall remain readily accessible.

This display operates on 100-240 volts 60 Hz, AC current. Insert the power cord into a 120 volts 60 Hz outlet. Never connect the display to direct current or anything other than the specified voltage.

To prevent electric shock from the display, do not use with an extension cord, receptacle, or other outlet unless the blades and ground terminal can be fully inserted to prevent blade exposure.

**CAUTION:** Never remove the back cover of the display as this can expose you to very high voltages and other hazards. If the display does not operate properly, unplug the display and call your authorized dealer or service center.

# SET UP INSTRUCTIONS

## Important:

1. The display is equipped with protective glass; however, it is best practice to never apply pressure to the screen display area which may compromise the integrity of the display. The manufacturer's warranty does not cover user abuse or improper installations.
2. All cables and cable covers MUST be connected and attached prior to installation on mount.
3. When routing cables through the cable entry make sure that the cables are formed in such a way as to remove any stress on the connectors.

## What's In The Box

Display

Remote (REM-0005)

Cord Cover

14 Screws (SCR-0043)

User Manual

## Connecting Cables

### Source Connection Guide

Connect cables from the source devices to their appropriate connector on the display.

RS-232



Antenna or Cable

Coaxial SPDIF

S-Video

AV / Video

AV / Audio L

AV / Audio R

Component 1 / PR

Component 1 / PB

Component 1 / Y

VGA

PC Audio

HDMI 2

HDMI 1

USB

## Cable Seals

1. Plug cables into proper input connection.



2. Run cable across foam gasket block.

Notes: a. If running one cable per block, run cable over middle of cable block.

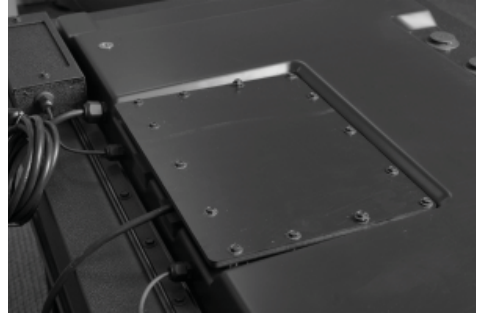
b. If running more than one cable on a block, ensure that cables are at least 1/4" apart to allow for proper sealing.



3. Cables will be sealed when rear cover plate is attached and screwed into place.

## Installation Of The Rear Cover Plate

1. Place cover plate directly over cables aligning holes with screw inserts.



2. Apply pressure to center of cover plate.

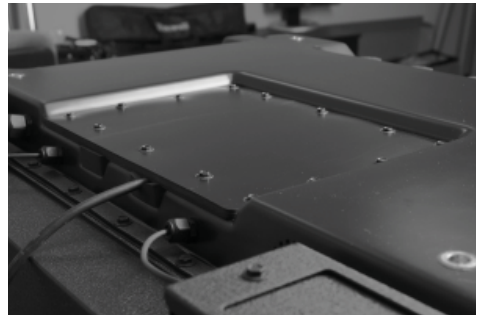
Note: Foam gasket block should compress when pressure is applied.

3. Screw in screws until they will no longer tighten.

Note: Do not over torque screws as they may strip and damage the cable seal.



4. When all screws are installed properly, the cables should appear to be completely encapsulated between the cable gland and the back cover plate.



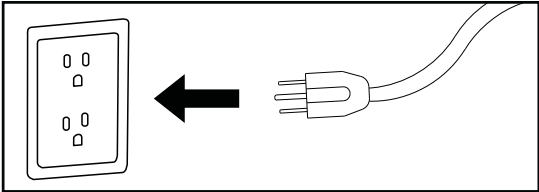


Connect To The Power Source

Connect the supplied power cord to the display.

The display should be installed close to an easily accessible power outlet. Fully insert the prongs into the power outlet socket. A loose connection may cause image degradation.

Only plug TV into an electrical outlet that has a GFI receptacle. If you run an extension cord, make sure it is an outdoor rated cord and plug. Insure that is placed safely and out of the way of people and animals.



Prepare Your Display For Mounting

**Note:** Install cables prior to mounting your display. Rear cover plate may be obstructed once the display is mounted.

IMPORTANT:

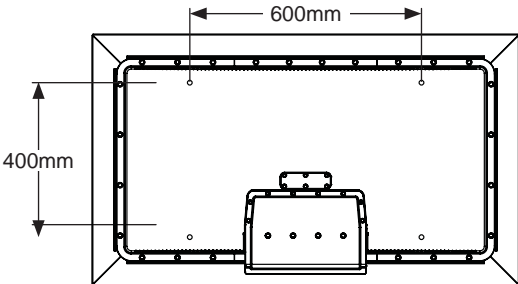
- 1. Do not apply pressure to the screen display area which may compromise the integrity of the display. The manufacturer's warranty does not cover user abuse or improper installations.
- 2. Do not mount screen so that it is facing into direct sunlight. Direct sunlight can cause the screen to temporarily go black. While designed to withstand all-weather environments, the screen is not designed to operate while facing into direct sunlight.

Wall mounting solution is not included with the unit and is sold separately. Peerless-AV provides a variety of all-weather mounting solutions. Contact your Peerless-AV representative for all-environment mounting solutions.

For your safety, only mount with an UL listed wall mount bracket that supports the weight of the display. When mounting the display outdoors or in harsh environments, only use wall mounts that are designed to resist water, rust and wind.

Examine the chart below to determine the mounting specifications for your display:

Model	Mounting Hole Pattern	Required Mounting Screws
CL-4765	600mm x 400mm	Four M8 screws
CL-5565	600mm x 400mm	Four M8 screws



Prepare The Screen For Viewing

- 1. Remove protective film from the screen.
- 2. Clean the screen with an approved screen cleaner or Isopropyl alcohol designated in the "Care of Screen" section. Do not use any window cleaners or anything containing ammonia.

## Battery Installation And Replacement

The remote control is powered by two 15V AAA batteries currently installed.

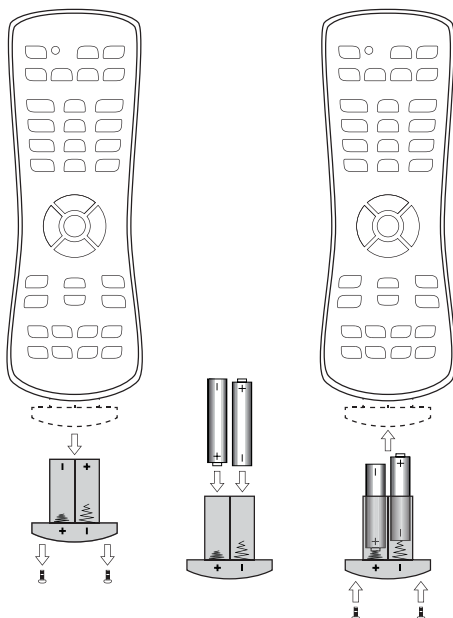
To install or replace batteries:

1. Remove the battery module of the remote control by removing the two screws on the end of the battery module. Slide the battery module out of the remote control.
2. Insert two new "AAA" size batteries into the battery module.  
**Important:** Match the batteries to the (+) and (-) marks on the battery module and remote control.
3. Slide the battery module back into the remote control and reinserting the two screws in the end of the battery module.

### ⚠ CAUTION

Incorrect usage of batteries can result in leaks or bursting. Peerless-AV recommends the following battery use:

1. Do not mix battery brands.
2. Do not combine new and old batteries. This can shorten the battery life or cause liquid leakage of the batteries.
3. Remove dead batteries immediately to prevent battery acid from leaking into the battery compartment.
4. Do not touch exposed battery acid as it may injure skin.
5. Remove the batteries if you do not intend to use the remote control for a long period of time.



## Power On/Off Your New Display

Power on your display by using the remote control or the rear power key as shown below. The display will power on but image may not appear for a few seconds as it completes its power up sequence.

### Remote control

Point the remote control at the IR sensor located in the upper right corner of the display and press the power key.

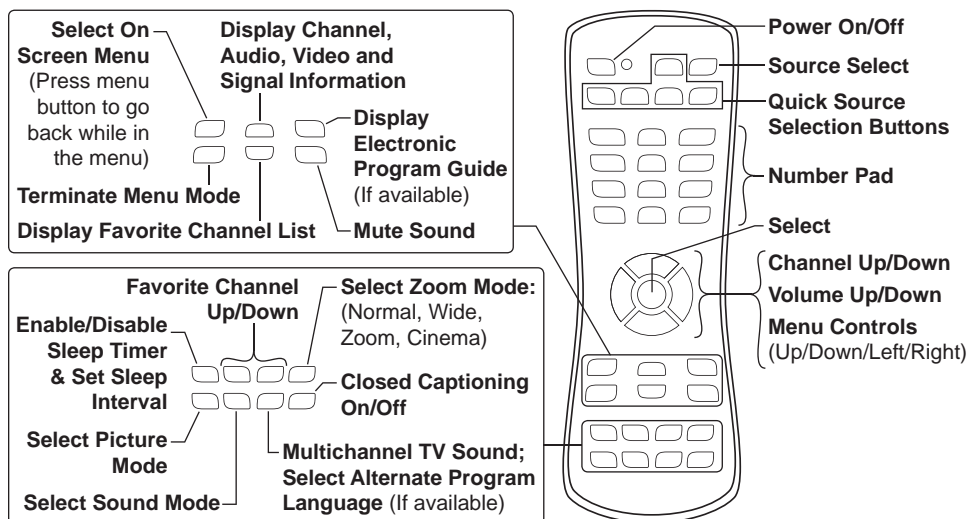


### Rear Power Key



# OPERATING INSTRUCTIONS

## Using The Remote Control



## Rear Keypad Controls

**DIRECT MODE:** Allows for quick access to source selection, volume settings and channel selection.

**MENU MODE:** Press the MENU button to access MENU MODE and activate the On Screen Display (OSD). For a description of OSD operation refer to the next section.

The keypad buttons are assigned as indicated in the table below.

Menu Mode	Direct Mode	
On/Off	On/Off	
Auto Config	Input Select	
Right	Volume Up	
Left	Volume Down	
Menu	Menu	
Select	Channel Up	
-	Channel Down	

## (RS-232C) Serial Control Of The Display

Attach an RS-232C cable cross-type (commercially available) to the supplied Din/D-Sub RS-232C for the connections.

**Note:** This operation system should be used by a person who is accustomed to using computers.

### Communication Conditions

Set the RS-232C communication settings on the PC to match the TV's communication conditions. The TV's communication settings are as follows:

Baud Rate .....38,400 bps  
Data Bits .....8 bits  
Parity .....None  
Stop Bit .....1 bit

### Communication Procedure

Send the control commands from the PC via the RS-232C connector.

The TV operates according to the received command and sends a response message to the PC.

Do not send multiple commands at the same time - wait until the PC receives the response before sending the next command.

### Control Codes

Function	Code
Menu	A0, F0, 55, FF, 4E, B1
Right	A0, F0, 55, FF, 05, FA
OK	A0, F0, 55, FF, 02, FD
Down	A0, F0, 55, FF, 0D, F2
Up	A0, F0, 55, FF, 17, E8
Left	A0, F0, 55, FF, 0C, F3
Source	A0, F0, 55, FF, 01, FE
(1)	A0, F0, 55, FF, 42, BD
(2)	A0, F0, 55, FF, 43, BC
(3)	A0, F0, 55, FF, 0F, F0
(4)	A0, F0, 55, FF, 1E, E1
(5)	A0, F0, 55, FF, 1D, E2
(6)	A0, F0, 55, FF, 1C, E3
(7)	A0, F0, 55, FF, 18, E7
(8)	A0, F0, 55, FF, 45, BA
(9)	A0, F0, 55, FF, 4C, B3
(0)	A0, F0, 55, FF, 56, A9
Exit	A0, F0, 55, FF, 1B, e4
Power On	A0, F0, 55, FF, AE, 51
Power Off	A0, F0, 55, FF, AF, 50
Power On/Off	A0, F0, 55, FF, 0B, F4
Volume +	A0, F0, 55, FF, 0A, F5
Volume -	A0, F0, 55, FF, 40, BF
Channel +	A0, F0, 55, FF, 55, AA
Channel -	A0, F0, 55, FF, 5A, A5

Function	Code
Mute	A0, F0, 55, FF, 14, EB
Sleep	A0, F0, 55, FF, 53, AC
AV	A0, F0, 55, FF, ED, 12
VGA	A0, F0, 55, FF, EA, 15
HDMI	A0, F0, 55, FF, EC, 13
HDMI1	A0, F0, 55, FF, E1, 1E
HDMI2	A0, F0, 55, FF, E2, 1D
S-VIDEO	A0, F0, 55, FF, E4, 1B
TV	A0, F0, 55, FF, E8, 17
DTV	A0, F0, 55, FF, E9, 16
Component	A0, F0, 55, FF, E7, 18
USB	A0, F0, 55, FF, 57, a8
PMODE	A0, F0, 55, FF, 4B, B4
Zoom	A0, F0, 55, FF, 51, AE
Surround	A0, F0, 55, FF, C7, 38
SMODE	A0, F0, 55, FF, 5B, A4
Text	A0, F0, 55, FF, 59, A6
VOL 25%	A0, F0, 55, FF, 21, dE
VOL 50%	A0, F0, 55, FF, 22, dD
VOL 75%	A0, F0, 55, FF, 23, dC
VOL 100%	A0, F0, 55, FF, 24, dB
Brightness 25%	A0, F0, 55, FF, 26, d9
Brightness 50%	A0, F0, 55, FF, 27, d8
Brightness 75%	A0, F0, 55, FF, 28, d7
Brightness 100%	A0, F0, 55, FF, 29, d6

## Navigating The On Screen Menu

Pressing the menu key on the remote or rear keypad will cause the On Screen Display (OSD) main page to be displayed with five menu tabs: Picture, Audio, Time, Setup, Lock and Channel. Use the cursor keys to move through the various sub menus. Pressing the menu key again will move the selection back one level. Press exit to quit.

Picture	
<b>Picture Mode</b>	Standard Dynamic Soft Personal
<b>Contrast</b>	Adjust contrast level
<b>Brightness</b>	Adjust brightness level
<b>Color</b>	Adjust color level
<b>Tint</b>	Adjust tint level
<b>Sharpness</b>	Adjust sharpness level
<b>Color Mode</b>	Normal Cool Warm

Time	
<b>Sleep Timer</b>	Set time interval to turn off inactive display
<b>Time Zone</b>	Select time zone
<b>Daylight Savings Time</b>	On/Off
<b>Clock</b>	No options

Lock	
<b>Password</b>	Set user password to prevent unauthorized access to OSD

Channel	
<b>Air/Cable</b>	Choose between Antenna and Cable
<b>Auto Scan</b>	Searches for available channels
<b>Favorite</b>	Shows favorite channels
<b>Show/Hide</b>	Enable/Disable unwanted channels
<b>Channel No.</b>	No options: Displays list of channels
<b>Channel Label</b>	Change channel names
<b>DTV Signal</b>	Displays channel info and signal strength

Audio	
<b>Sound Mode</b>	Standard Music Movie Personal
<b>Bass</b>	Adjust bass level
<b>Treble</b>	Adjust treble level
<b>Balance</b>	Adjust balance level
<b>Surround</b>	On/Off
<b>AVC</b> (Automatic Volume Control)	On/Off
<b>SPDIF Type</b> (Digital Audio Output Format)	PCM Raw
<b>Audio Language</b>	English Spanish French

Setup	
<b>Menu Languages</b>	English Spanish French
<b>Transparency</b>	On/Off
<b>Zoom Mode</b>	Normal Wide Zoom Cinema
<b>Noise Reduction</b>	Off Weak Middle Strong
<b>Advanced</b>	No Option
<b>Closed Caption</b>	On/Off
Basic Selection:	CC 1-4 Text 1-4
Advanced Selection:	Service 1-6
Option:	Select Font Size, Color and Opacity
<b>XVS</b>	On/Off
<b>Restore Defaults</b>	Restore all options to their original settings

## TIPS

### Troubleshooting

<b>No Picture</b>	<ul style="list-style-type: none"><li>• Check that the display is turned on.</li><li>• Is the power cord inserted into a power outlet?</li><li>• Test the power outlet by plugging in another device into the outlet.</li></ul>
<b>Remote Control Doesn't Work</b>	<ul style="list-style-type: none"><li>• Make sure there is a direct path between the remote control and the IR receiver located at the top right of the display.</li><li>• Was the shipping tab removed and the battery re-installed correctly?</li><li>• Install new battery.</li></ul>
<b>Picture Appears Slowly After Switching On</b>	<ul style="list-style-type: none"><li>• This is normal; the display image is disabled during the start up process.</li><li>• After an image appears it can take several minutes for the LCD display to reach it's normal operating brightness.</li><li>• On first use activate power control by pressing power button on remote.</li></ul>

### Care Of The Screen

Do not rub or strike the screen with anything hard as this may scratch, mar, or even damage the screen permanently .

Never use ammonia or any cleaner containing ammonia, as it will damage the anti-glare coating on the screen. Only use Isopropyl alcohol or an approved screen cleaner to clean the screen.

Protective covers are available for Peerless-AV all-weather TVs. Contact your Peerless-AV representative to get the right cover for your screen.

Unplug the power cord before cleaning the screen. Dust the display by wiping the screen and the cabinet with a soft, clean cloth. If the screen requires additional cleaning, use a clean, damp cloth. Do not use liquid cleaners, aerosol cleaners, or solvents of any kind.

### Mobile Telephone Warning

Keep your mobile telephone away from your display to avoid disturbances in the picture or sound, possibly causing permanent damage to your display.

### End Of Life Directives

In an effort to produce environmentally friendly products, your new display contains materials that can be recycled and reused. At the end of your display life, specialized companies can minimize display waste by separating reusable materials from non-reusable materials. Please ensure you dispose of your display according to local regulations.

### License Agreement And Trademark Notice



HDMI, the HDMI logo and High-Definition Multimedia Interface are trademarks or registered trademarks of HDMI Licensing LLC in the United States and other countries.



Manufactured under license from Dolby Laboratories. Dolby and the double-D symbol are trademarks of Dolby Laboratories.

## PRODUCT SPECIFICATIONS

Specifications subject to change without notice

Display	
<b>Screen Size</b>	CL-4765 47" diagonal CL-5565 55" diagonal
<b>Aspect Ratio</b>	16:9
<b>Resolution</b>	1920 x 1080
<b>Brightness</b>	700 cd/m <sup>2</sup>
<b>Backlight Adjustment</b>	Automatic (ambient light sensor)
<b>Contrast Ratio</b>	1000:1
<b>Viewing Angle</b>	178° vertical/horizontal
<b>Response Time</b>	9ms (gray to gray)
<b>Refresh Rate</b>	CL-4765: 60 Hz CL-5565: 120Hz

Power	
<b>AC Input</b>	90 VAC to 240 VAC, 50 to 60 Hz
<b>Power Consumption</b>	CL-4765 Display: 135 W CL-5565 Display :145 W

Environmental	
<b>Operating Temperature</b>	-24° F to 124° F
<b>Storage Temperature</b>	0° F to 124° F (unit left plugged in)
<b>IP Rating</b>	IP65
<b>Nema Rating</b>	4X

Mechanical	
<b>Display Size:</b>	(W x H x D) CL-4765 43.6" x 25.7" x 5.3" CL-5565 50.5" x 29.5" x 5.3"
<b>Enclosure Color</b>	Black
<b>Enclosure Glass</b>	Anti-reflective and UV protection
<b>VESA Mount</b>	600 mm x 400 mm
<b>Net Weight</b>	CL-4765: 85 lbs CL-5565: 130 lbs
<b>Shipping Size</b>	(W x H x D) CL-4765 49" x 31" x 10.5" CL-5565 56" x 35.5" x 11"
<b>Shipping Weight</b>	CL-4765: 93 lbs CL-5565: 155 lbs

TV Controller Features	
<b>Analog TV</b>	NTSC
<b>Digital TV</b>	ATSC
<b>Picture Adjustment</b>	Brightness/Contrast/ Saturation/Tint/Sharpness/ Noise reduction
<b>Picture Mode</b>	Standard, Dynamic, Personal, Soft
<b>Color Temperature Adjustment</b>	Cool, Normal, Warm
<b>Screen Adjustment</b>	Normal/Wide/Zoom
<b>Clock, Sleep Timer</b>	Yes
<b>MTS</b>	Yes
<b>V-chip</b>	Yes
<b>Closed Caption</b>	Yes
<b>Electronic Program Guide</b>	Yes
<b>Noise Reduction</b>	Yes
<b>3-D Comb Filter and De-interlace</b>	Yes
<b>Mute</b>	Yes
<b>OSD Language</b>	English, French, Spanish

Input/Output Connections	
<b>TV Input</b>	Coax, 75 ohm (x1)
<b>VGA Input</b>	15 pin D-SUB (x1)
<b>HDMI Input</b>	HDMI (x2), 480i, 480p, 720p, 1080i, 1080p
<b>S-Video Input</b>	Mini DIN (x1)
<b>CVBS Input</b>	RCA (x1)
<b>YPbPr Input</b>	RCA (x2), 480i, 480p, 720p, 1080i, 1080p
<b>VGA Stereo Audio Input</b>	3mm Accessory Jack (x1)
<b>CVBS Stereo Audio Input</b>	RCA (x1)
<b>YPbPr Stereo Audio Input</b>	RCA (x2)
<b>Audio Stereo Output</b>	3mm Jack (10W + 10W)

## TWO YEAR PARTS & LABOR LIMITED WARRANTY

The Peerless-AV Outdoor TV/Display is warranted to be free of defects in material and workmanship from the time of purchase by the original owner. If this product is found and proved to be defective under the terms and conditions of this warranty, Peerless-AV will repair or replace defective parts with new and/or reconditioned parts at no charge for the parts and labor to the original owner, subject to the terms and conditions of this Limited Warranty.

This Limited Warranty covers failures due to defects in material or workmanship that occur during normal residential or commercial use as follows:

1. Parts – the warranty period for parts are: two (2) years from the date of original purchase. During the applicable Limited Warranty period for parts, defective parts will be replaced at no charge. Parts used for the replacement will be warranted for the remainder of the original warranty period for those parts.
2. Labor – the warranty period for labor is: two (2) years from the date of original purchase. During the applicable Limited Warranty period for labor, Peerless-AV will provide the labor for warranty repair at no charge for a period of two (2) years from the date of original purchase.
3. Original owner must provide verification of the date of purchase when requesting Limited Warranty Services. A copy of the original Dated Sales Receipt is required together with the product to obtain service under this Limited Warranty. Product Registration at the time of purchase is required.
4. All repairs must be performed by a Peerless-AV Authorized Service Provider.
5. Customer is responsible for returning (including any freight and shipping costs) defective unit to a Peerless-AV Authorized Service Provider. If the product is found to have no defects, the customer will be responsible for return shipping costs as well.

### THIS LIMITED WARRANTY DOES NOT COVER:

- Shipping damage.
- Damage caused during customer unpacking, and/or removal of packing materials.
- Damage due to improper, incorrect or insufficient AC voltage.
- Damage due to power surges or lightning strikes.
- Damage which results from fire, flood, lightning, tornado, hurricane, large hail, extremely gusty winds, sand storms, vandalism, terrorism or other acts of nature.
- Any unit which has been modified or damaged due to improper installation or failure to obey the operating instructions provided in the User Manual.
- Any failure, loss, damage or personal injury due to accident, neglect, misuse, abuse, improper operation, improper maintenance, improper storage, alteration to the unit, or failure by the consumer to follow operating instructions provided in the User Manual.
- Any owner other than the original owner.
- Any unit purchased from an unauthorized seller.
- If the original product serial number has been removed, defaced or tampered with in any way.
- Any transportation charges incurred in connection with warranty services.
- Indirect, consequential, or special damages, except as required by federal or state laws.
- Any unit tampered with, modified, adjusted or repaired by any party other than the Peerless-AV Authorized Service Provider.
- Any cosmetic damages to the surface or exterior that has been defaced or faded, or caused by normal wear and tear or exposure to chemicals, acid rain, large hail or adverse weather conditions.
- Because the TV/display cabinet and components are hand-assembled and altered, we do not cover minor cabinet blemishes or minor scratches to the exterior of the unit.
- Picture quality when installed in direct sunlight and uncovered where sun is shining directly on screen.
- Any damage, scratches or blemishes to the screen and/or exterior cabinet due to end-user cleaning.
- Dirty air waves, and/or unusual signal interference due to weak signal from multi-wire runs or weak signal from cable or satellite service providers or unusual signal interference or lack of distance when using the Digital Wireless Video/Audio Package.
- Return shipping when no defect is found.

Peerless-AV and its representatives or agents shall in no event be liable for any general, indirect or consequential damages arising out of or caused by the use of or the inability to use this product.

This warranty is made in lieu of all other warranties, expressed or implied, and all other liabilities on the part of Peerless-AV. Any other warranties, including the warranties of merchantability and fitness for a particular purpose are hereby disclaimed by Peerless-AV and its representatives and/or agents.

The laws of some states do not allow exclusion of implied warranties; therefore, this warranty shall be deemed modified to be consistent with such laws. This Limited Warranty gives you specific legal rights. You may also have other rights that vary from state to state.

All warranty inspections and repairs must be performed by Peerless-AV or its authorized service representations.

Customer Care: 800.865.2112 or 630.375.5100

The logo for Peerless-AV features the word "peerless" in a bold, lowercase, red sans-serif font. To its right, the letters "AV" are enclosed within a red outline of a television set, with a registered trademark symbol (®) to the upper right of the "V".

**Peerless-AV**  
2300 White Oak Circle  
Aurora, IL 60502  
Email: tech@peerlessmounts.com  
Ph: (800) 865-2112  
Fax: (800) 359-6500  
www.peerless-av.com

© 2015, Peerless Industries, Inc.